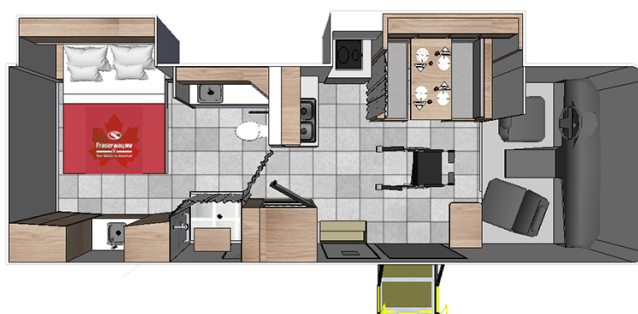


# Luxury Beaver A30 Wheelchair Accessible Canada

Modèle deluxe



Description	<p>This Motorhome is equipped with an electric ramp, a wide entrance door, and a specifically designed interior to accommodate our guests in a wheelchair.</p> <p>The plans, dimensions and layouts here of the Beaver A 30 Wheelchair Accessible are indicative and may vary without notice.</p>
Characteristics	<p><b>Beaver 30 Wheelchair accessible</b></p> <p>Sleeps : up to 4 adults (4 seatbelts + anchor point for 1 wheelchair)</p> <p>Chassis Ford F-53</p> <p>Engine V10 gasoline</p> <p>Approximative consumption 24-37L/100km</p> <p>Automatic transmission</p> <p>Cruise control</p> <p><a href="#">? Virtual visit of the Beaver 30 Wheelchair accessible model here.</a></p>
Fuel	Gasoline
Dimensions	<p>Length: 9.45 m (31')</p> <p>Width: 2.59 m (8'6")</p> <p>Height: 3.05 m (10')</p> <p>Interior height: 2.03 m (6'8")</p>

Passengers	4 sleeps 4 seatbelts + anchor point for 1 wheelchair  Please note that dinette table may need to be lowered when infant seat is installed, in that case no adults can sit in dinette while travelling. Meaning while driving : 2 seatbelts, 1 infant seat and 1 wheelchair.
Reserve	Fuel tank: 303 L Fresh water tank: 295 L Grey water tank: 155 L Black water tank: 155 L Propane: 68 L
Beds	Cabover bed: 203 x 121 cm (80" x 48") Dinette bed: 188 x 106 cm (74" x 42") Rear bed: 190 x 152 cm (75" x 60")
Kitchen	Sink (hot and cold water) Stove Oven (propane) Microwave Fridge
Shower/Toilet	Shower Toilet Hot and cold water
Heating/Air Conditionning	Heating and air conditioning in the driver's cabin Heating and air conditioning while parked
Energy	<b>On-Board Generator.</b> Allows for use of wall plugs, micro-wave, heating and air conditioning when vehicle is not connected to an electrical hook-up. <b>Propane Gas.</b> <b>Auxiliary Battery.</b> Batteries will last around 12 hours depending on use, and are recharged when driving the vehicle. <b>Battery boost.</b> Battery that helps to quickly recharge a discharged battery. <b>12V outlet.</b> Remember to bring your adaptors for charging your personal electronics such as cameras and phones. <b>Solar panel.</b>
Audio & Connexions	USB plug-in Bluetooth
Complementary Equipment	Awning Backup camera Tether hooks for infant, child or booster seats Solar panel