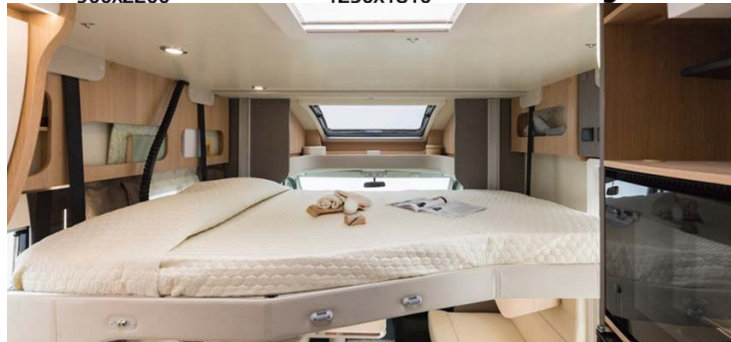
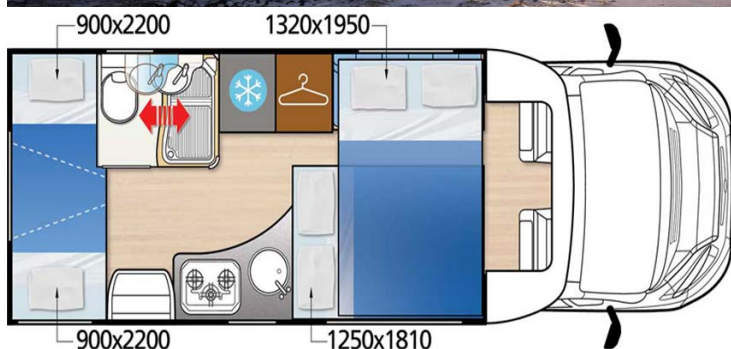
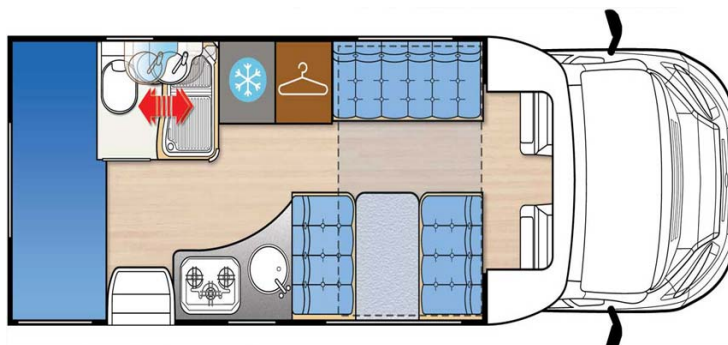


Motorhome Fjords Motorhom 6 Frigg Iceland

Modèle standard



Description	This motorhome is economical on fuel and is perfect for a family. It has a big, over cab bed and all the equipment for optimal comfort.
Characteristics	Fjords Motorhome 6 Frigg Year : 2015-2019 Manual transmission Engine : 2.3L Power steering Passage from cell to driver's cab
Fuel	Diesel Approx. fuel consumption: 9 to 14L/100km (15-25 mpg)
Dimensions	Length : 6.99 m Width : 2.35 m Height: 3.05 m Interior height: 2.09 m
Passengers	6
Reserve	Clean water tank: 120 L Grey water tank: 120 L Gas tank (propane): 9 kg Fuel tank: 90 L

Beds	Over cab bed: 150 x 209 cm Dinette bed: 180 x 125 cm Bunk beds : 93 x 220 cm (each)
Kitchen	Refrigerator Cooker (3 burners)
Shower/Toilet	Shower Toilet Lavabo Hot and cold water supply
Heating/Air Conditionning	Heating
Energy	Power supply via cable to external 230V connection Auxiliary battery 12V
Audio & Connexions	Audio: CD, RADIO, AUX, MP3