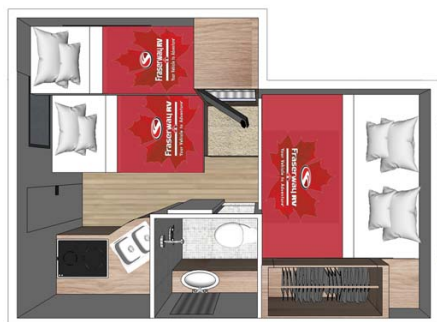
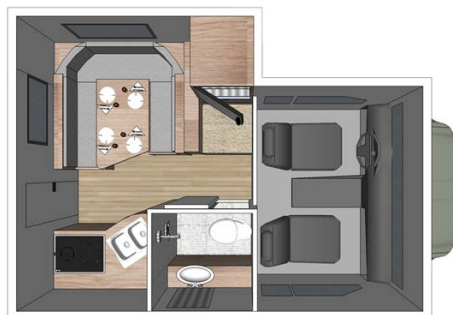


Truck Camper Beaver Truck Camper Bunk Canada

Modèle deluxe



Description	<p>With space for up to 4 or 5, this well equipped truck camper is practical, comfortable, and economic.</p> <p>The plans, dimensions and layouts here of the Beaver TCB are indicative and may vary without notice.</p>
Characteristics	<p>Beaver TCB</p> <p>Sleepss : up to 5</p> <p>Chassis Ford</p> <p>4 wheel drive</p> <p>Engine V8 diesel</p> <p>Approximative consumption 15-22L/100km</p> <p>Automatic transmission</p> <p>Cruise control</p> <p>? Virtual visit of the Beaver TCB model here.</p>
Fuel	Diesel
Dimensions	<p>Length: 7.57-7.62 m (23'1"-24'7")</p> <p>Width: 2.50 m (8'2")</p> <p>Height: 3.89 m (13'1")</p> <p>Interior height: 1.95 m (6'4")</p>
Passengers	5 sleeps

Reserve	Fuel tank: 98-128 L Fresh water tank: 142 L Grey water tank: 115 L Black water tank: 68 L Propane: 32 L
Beds	Cabover bed: 197 x 150 cm (77" x 59") Dinette bed: 183 x 80 cm (72" x 31") Bunk bed: 193 x 66 cm (76" x 26")
Kitchen	Sink (hot and cold water) Stove Oven (propane) Fridge
Shower/Toilet	Shower Toilet Hot and cold water
Heating/Air Conditionning	Heating and air conditioning in the driver's cabin Heating while parked
Energy	Propane Gas. Auxiliary Battery. Batteries will last around 12 hours depending on use, and are recharged when driving the vehicle, or by the photovoltaic panels. 12V outlet. Remember to bring your adaptors for charging your personal electronics such as cameras and phones. Solar panel.
Audio & Connexions	USB plug-in Bluetooth
Complementary Equipment	Awning Backup camera Navigation system Tether hooks for infant, child or booster seats Solar panel